

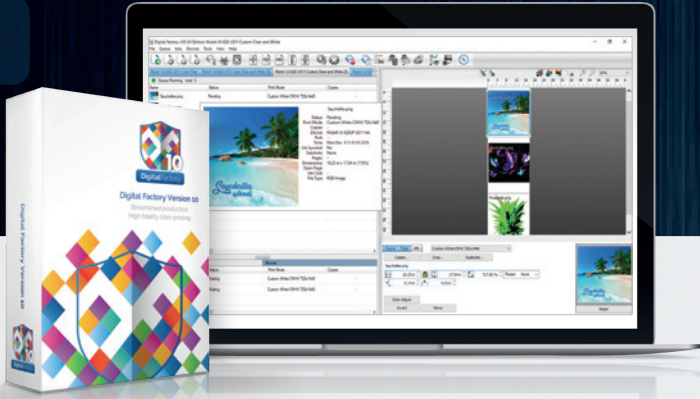


MAXIMISE THE POWER OF YOUR MUTOH® DTO PRINTER

Specialised UV printing RIP software with custom drivers and colour profiles specifically designed to use alongside Mutoh direct to object printers. Leverage the powerful print technology of Mutoh UV printers with industry-leading RIP software that provides unmatched colour quality, simplified job preparation tools and complete production workflow management.



LEADING EDGE COLOUR MANAGEMENT & PRODUCTION WORKFLOW TECHNOLOGY



HIGH FIDELITY COLOUR. PRECISE COLOUR REPRODUCTION WITH UNMATCHED VIBRANCY

Using a state-of-the-art colour management engine, Digital Factory UV Mutoh Edition provides an extended colour gamut and also includes professionally created colour profiles that provide the most vibrant, colour accurate prints available today.

INDUSTRY-LEADING WHITE INK MANAGEMENT

Automated settings as well as manual user controls provide the utmost in white ink handling. Unique handling of white underbase based on pixel transparency provides the smoothest blends, gradients and fades. Provides amazing print quality and saves on white ink costs at the same time.



COMPLETE, CENTRALISED JOB MANAGEMENT

Digital Factory UV Mutoh® Edition features Visual Production Manager™, a simple easy to use interface that includes multiple pre-set queues that support a variety of colour and production requirements.

Easy Access Multiple Queue Tabs

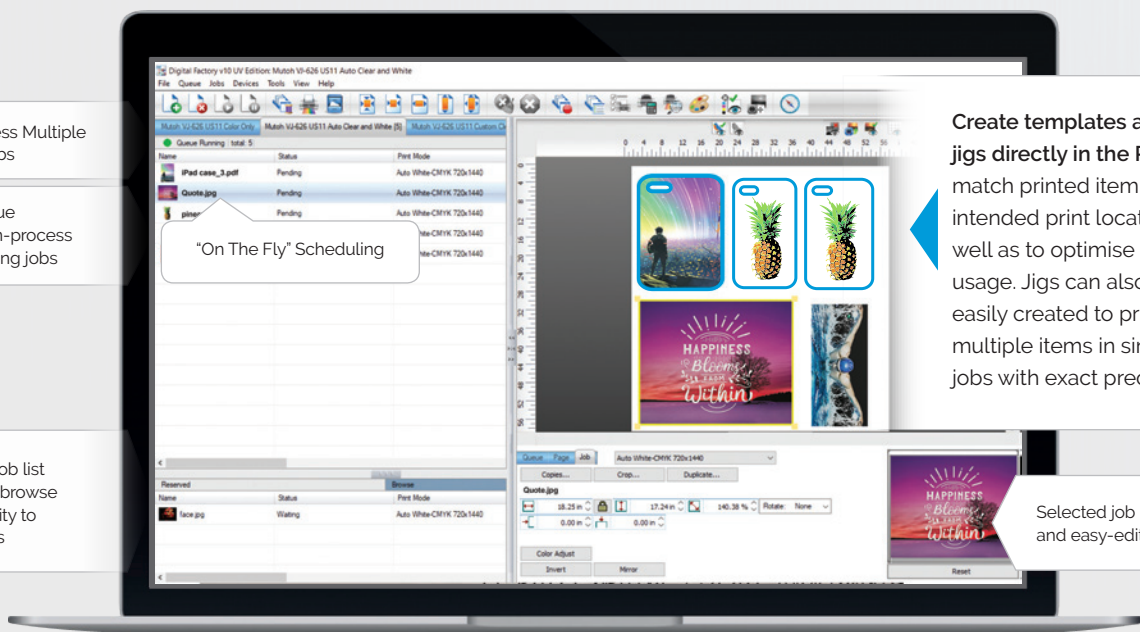
Each queue displays in-process and pending jobs

"On The Fly" Scheduling

Archived job list or built-in browse functionality to locate files

Create templates and jigs directly in the RIP to match printed item shape, intended print location as well as to optimise material usage. Jigs can also be easily created to print multiple items in single run jobs with exact precision.

Selected job information and easy-edit options



SIMPLIFIED, HIGH-VALUE PRINT PRODUCTION



UNMATCHED TEXTURED PRINTING TOOLS AND PRE-SETS



UV printing provides almost limitless production possibilities. Pre-set production queues simplify what can sometimes be complex production set-ups. For even more control, individual ink channel controls provide advanced, precision controls over production effects such as image build-up, highlights, gloss finishes and much more.



AUTOMATED UNDERBASE/ OVERPRINT

Preparing files within design applications to include underbase as well as overprint data is a time-consuming task that requires expert design knowledge. Digital Factory includes automated queue pre-sets that eliminate the need for file pre-production.



BUILT-IN DESIGN AND PRODUCTION PLUG-INS

Special effects plug-ins as well as production plug-ins such as SuperSize image provide the ability to modify as well as improve over-all image quality directly within the RIP software without having to use third-party applications.

BLEND SUBSTRATE COLOUR DIRECTLY INTO PRINTED DESIGN

Automated black, white or colour removal from design utilises matching substrate colour as part of completed print job. Improves overall print appearance while also reducing ink consumption.



ENHANCED, AUTOMATED WORKFLOW SUPPORT

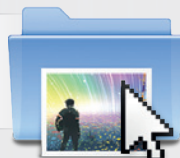
Automation tools that extend capabilities to higher volume production management as your business grows. Hot folder support combined with advanced barcode functionality enable customised job management tailored to your workflow.



VIRTUALLY UNLIMITED FILE FORMAT SUPPORT

Support for most widely used file formats including a built-in, industrial strength .pdf interpreter provides flexible file handling options.

Drag files to hot folders



Print directly from your favourite design application



OPTIMISED PRINT SPEED

for flat, textured as well as braille printing*



Seamless integration with widely used design applications such as Corel and Adobe products eliminates need to file export/import into RIP software

Digital Factory's advanced print processing algorithm prints even the most complex files quickly and efficiently.

*Braille support requires the Digital Designer Pack add-on.

DIGITAL FACTORY UV - MUTOH® EDITION FEATURES

PERFORMANCE AND COMPATIBILITY FEATURES

- Customised drivers and colour profiles for Mutoh® ValueJet 426UF/626UF UV printers
- Windows® 10, 8, 7 (32/64 bit) support
- Lightning fast 64-bit architecture
- Unique, single window visual interface
- Simplified software navigation; queue tabs, page view, job properties
- Tab-based multiple queue system based on job type, colour requirements, printer
- On-the-fly job scheduling with drag and drop file handling
- Complete production control; Job archiving, history, print status, job log
- Network printing support using hot folders
- Automated TCPIP port search for easier network print setup
- Barcode support for automated production workflow
- "Send-to" plug-ins for Adobe and Corel products
- Optimised RIP processing speeds including RIP threading (multiple job processing)
- RIP once, print many

- Inline print support. Single pass colour, white clear printing (dependent on printer capability)
- Seamless .PDF support as well as many other widely used file formats
- Worldwide language support adhering to Unicode standards

UV SPECIFIC COLOUR MANAGEMENT AND PRODUCTION FEATURES

- Vibrant, high fidelity colour printing on a wide variety of materials
- Professional colour profiles included (white, black, coloured substrates)
- Pre-set printing queues provide a variety of print options including flat and textured pre-sets
- Complete colour controls by image detail (shadows, midtones, highlights)
- Ability to fine tune all colour channels and ink volumes
- Easy colour adjustments by job or queue
- Quick job colour replacement tools
- Industry-leading white ink management
- Automated white underbase based on image transparency (incl. PDF/EPS)
- Automated overprint for clear or white highlight printing

- Simplified textured, multi-layered 3 dimensional printing
- Texturing by ink channel controls
- Braille printing support. Braille support requires the Digital Designer Pack add-on.

BUILT IN PRE-PRODUCTION TOOLS

- Supersize image. Scale low resolution images reducing pixelisation
- "Knock Me Black Out"
- "Knock Me Colour Out"
- Automatic image trapping by colour plane
- Special effects tools/filters incl. distressed, frames, sharpen.
- Advanced transparency support for vector and bitmap designs
- Complete print preview
- Preview raw data by each colour channel
- Custom template creation
- Integrated jig design for material shapes of all types (within template feature)
- Pre-production tools; Copy, Crop, Rotate, Mirror, Scale
- Detailed job costing

Mutoh Partner Network

Across the EMEA territory, Mutoh products are distributed and supported exclusively via a wide network of certified distributors through the Mutoh business divisions Mutoh Europe, Mutoh Deutschland and Mutoh North Europe.



Mutoh Europe | www.mutoh.eu

Mutoh Deutschland | www.mutoh.de

Mutoh North Europe | www.mutohnorth.eu

IN CONJUNCTION WITH:



Digital Factory is a registered trademark of CADlink Technology Corporation. All other trademarks are a property of their respective owners.

SUPPORTED PRINTERS:

Supports Mutoh® ValueJet 426UF and 626UF UV printers



COMPATIBLE WITH:



SYSTEM REQUIREMENTS:

	MINIMUM	RECOMMENDED
CPU	Dual Core (2.0 Ghz or higher)	Triple Core (2.0 Ghz or higher)
HDD	500 GB	750+ GB
RAM	2 GB	4GB