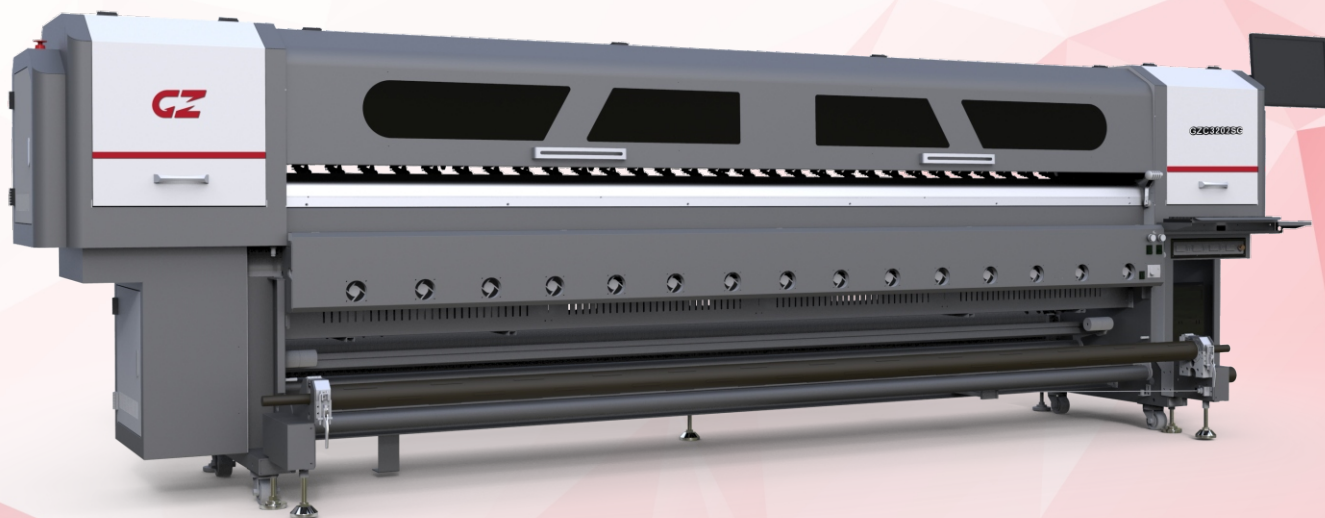


GZC3202SG



- ★ Two Starfire heads with speed up to **129m²/h!**
- ★ Stronger and more precise body!
- ★ Revolutionary print head with RediJet Tech!
- ★ **G**nTek Negative Pressure Recirculation System!
- ★ More humanized media feeding system!
- ★ Accurate pneumatic shaft taking up!
- ★ Intelligent energy-saving IR drier!



A wide range of applications solution!

With continuous ink recirculation and robust repairable construction, **Dimatix Starfire 1024** print head delivers unparalleled saturation and smooth gradient.



EnTek recirculation solution!

GZ Negative pressure recirculation system with Japanese components perfectly plays the advantages of Starfire head, assuring steady ink delivery and minimizing maintenance.



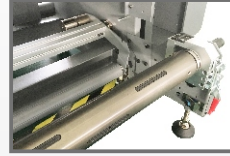
Smart IR drier!

Smart synchronizing function could dry the printing efficiently and save the electricity. Metal net and spring bracket protect the IR tubes during transportation and avoid fire risk during printing.



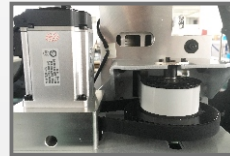
Improved chassis and platen!

CNC aluminum beam and silent linear guide assure high speed, high resolution printing and long running life. Angled printing platen gives steady and anti wrinkle media delivery.



Optimized feeding and taking up system!

Feeding system with redesigned media holder is for easier and humanized operation. Taking up system with pneumatic shaft and dancer bar enables more precise taking up.



Panasonic A6 servo system!

Panasonic A6 servo system has higher torque and lower vibration, assuring more stable and precise carriage movement.

ITEM	SPECIFICATION	
Model	GZC3202SG	
Print Head	2 Starfire 1024(10pl)	2 Starfire 1024(25pl)
Ink	C.M.Y.K solvent/eco-solvent	
Ink supply system	EnTek Negative Pressure Recirculation System	
Printing width	Max. 3200mm	
Media Type	Banner, Frontlit, Backlit, Vinyl, Film.....	
Media delivery system	Automatic media feeding and taking up system with pneumatic shaft	
Drying system	Pre, mid, post and extended heater plus smart IR drier	
Printing Speed	300x400dpi 129m ² /h 600x400dpi 115m ² /h 300x600dpi 86m ² /h 600x600dpi 76m ² /h 300x800dpi 67m ² /h 600x800dpi 59m ² /h	300x400dpi 126m ² /h 600x400dpi 97m ² /h 300x600dpi 87m ² /h 600x600dpi 65m ² /h 300x800dpi 68m ² /h 600x800dpi 51m ² /h
Data Interface	External: USB2.0; Internal: High-speed SCSI	
Working Environment	Temp.23°C~29°C, Humidity:50%~80%	
Software	PhotoPRINT/Maintop.....+GZ control console	
Power	50Hz/AC,220V±10% 13A(printer)+16.73A(QT drying system)	
Installed/ Package Size	LxWxH(mm): 4790x1230x1460/ 4930x1150x1740	
G.W./N.W.	1190kgs/ 890kgs	

Specifications are liable to change without prior notice. The speeds are measured in 3.2m width printing.

Gongzheng Group Co., Ltd.

Add: Miaobei Village, Yongjia County, Wenzhou City, Zhejiang Province, China 325102
Tel: +86-577-67319778
Fax: +86-577-67319775
Email: gzsales@gongzheng.com
Web: www.gongzheng.com



Authorized distributor:

