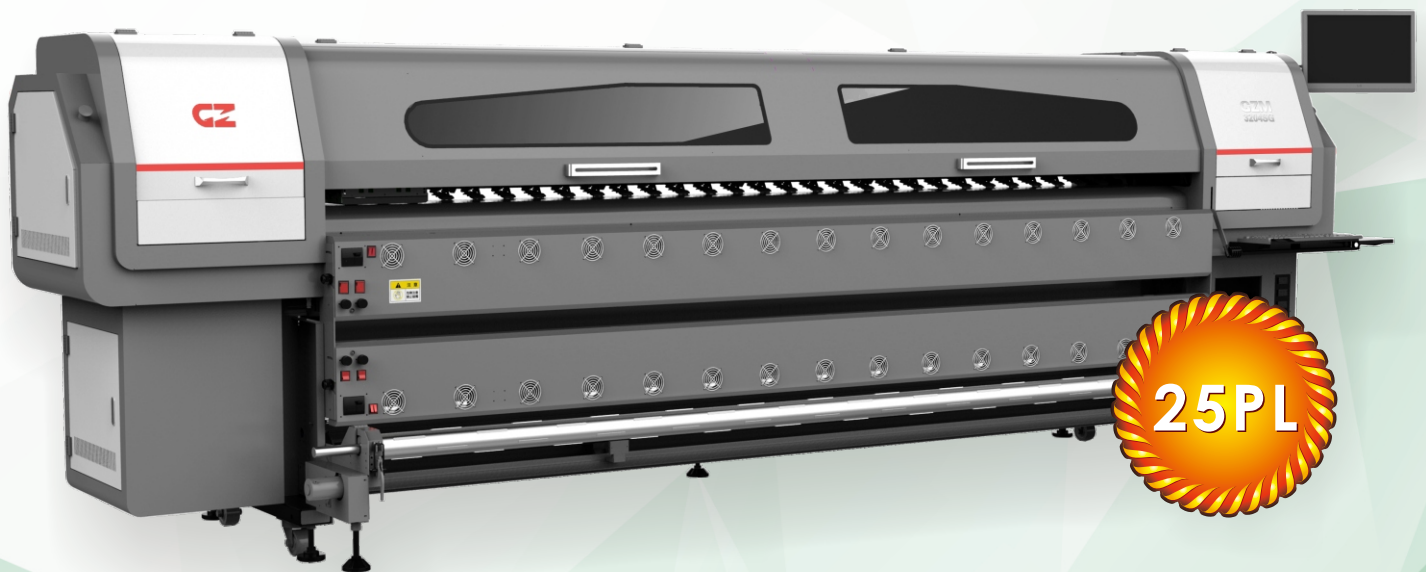


# GZM+

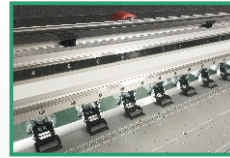


- ★ **EXTREME SPEED** up to **229m<sup>2</sup>/h!**
- ★ **More precise and durable enhanced body!**
- ★ **Upgraded Panasonic A6** servo system!
- ★ **EnTek Negative Pressure Recirculation System!**
- ★ **Intelligent** energy-saving thermal drying system!
- ★ **Advanced color management software!**
- ★ **Optional separate taking up system!**
- ★ **Optional mesh printing kit!**



**A wide range of applications solution!**

With continuous ink recirculation and robust repairable construction, **Dimatix Starfire 1024** print head delivers unparalleled saturation and smooth gradient.



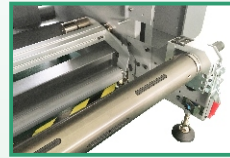
**More durable and precise body!**

Reinforced CNC aluminum beam, dual linear guide and enhanced printing platen assure high speed, high resolution printing and prevents deforming during transportation.



**EnTek recirculation solution!**

GZ Negative pressure recirculation system with pressure balancing unit and pressure protection unit assures steady ink delivery and minimum maintenance.



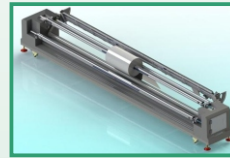
**Optimized feeding and taking up system!**

Feeding system with redesigned media holder is for easier and humanized operation. Taking up system with pneumatic shaft and dancer bar enables more precise taking up.



**Intelligent IR drying system!**

Intelligent IR drying system with industrial power switches could synchronously treat the printing evenly and efficiently. With the springs and metal net, it is uneasy to get broken and more safe.



**Optional: Separate taking up system!**

Separate media taking up system with IR drier could dry the printing thoroughly during high speed printing. An additional roll saves media switching time to speed up production.

ITEM	SPECIFICATION	
Model	GZM3204SG	GZM3202SG
Print Head	4 Starfire 1024(25pl)	2 Starfire 1024(25pl)
Ink	C.M.Y.K solvent/eco-solvent	
Ink supply system	EnTek Negative Pressure Recirculation System	
Printing width	Max. 3200mm	
Media Type	Banner, Frontlit, Backlit, Vinyl, Film.....	
Feeding system	Automatic media feeding and taking up system with pneumatic shaft	
Drying system	Pre, mid, post and extended heater plus intelligent IR drying system	
Printing Speed	300x400dpi 229m <sup>2</sup> /h 600x400dpi 177m <sup>2</sup> /h 300x600dpi 164m <sup>2</sup> /h 600x600dpi 125m <sup>2</sup> /h 300x800dpi 128m <sup>2</sup> /h 600x800dpi 97m <sup>2</sup> /h	300x400dpi 126m <sup>2</sup> /h 600x400dpi 97m <sup>2</sup> /h 300x600dpi 87m <sup>2</sup> /h 600x600dpi 65m <sup>2</sup> /h 300x800dpi 68m <sup>2</sup> /h 600x800dpi 51m <sup>2</sup> /h
Data Interface	External: USB2.0; Internal: High-speed SCSI	
Working Environment	Temp.23°C~29°C, Humidity:50%~80%	
Software	Onyx+GZ control console	
Power	50Hz/AC,220V±10% 13A(printer)+18Ax2(IR drying system)	
Installed/ Package Size	LxWxH(mm): 4660x960x1250/ 4930x1150x1690	
G.W./N.W.	1345kgs/ 1115kgs	

Specifications are liable to change without prior notice. The printing speeds are measured in 3.2m width printing.

**Gongzheng Group Co., Ltd.**

Add: Miaobei Village, Yongjia County, Wenzhou City, Zhejiang Province, China 325102  
Tel: +86-577-67319778  
Fax: +86-577-67319775  
Email: gzsales@gongzheng.com  
Web: www.gongzheng.com



**Authorized distributor:**

