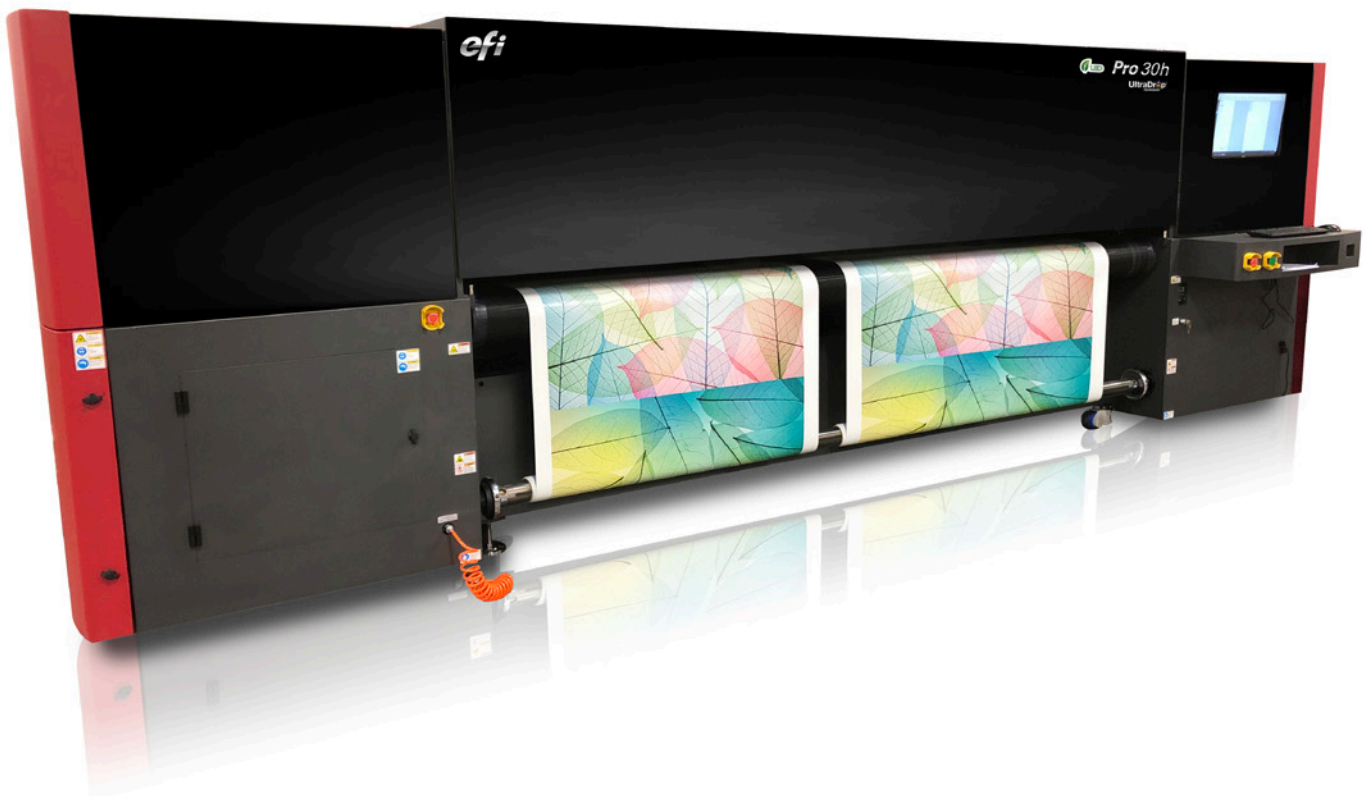




## Pro 30h

Wide Format Inkjet Printer

Widen your  
competitive advantage



# Widen your capabilities, versatility and productivity with the EFI Pro 30h wide-format printer

The EFI™ Pro 30h hybrid flatbed/roll-fed LED entry-level production printer brings a whole new meaning to the word “wide.”

It prints on a wide variety of substrates for a wide variety of applications, all with superior image quality and environmentally friendly benefits. The result is that the EFI Pro 30h broadens your capabilities, versatility and productivity – all at a very attractive price point.



*Offer premium-margin day/night backlit graphics using EFI's industry-leading white ink and multi-layer print capability*

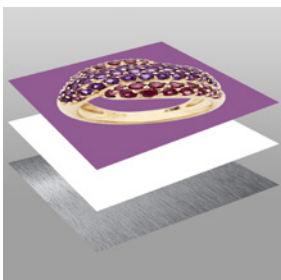
## Wide capabilities that give you a competitive edge

The 3.2-metre EFI Pro 30h printer is ideal for commercial printers, sign shops and in-plant printers looking to start, upgrade or add board and roll-to-roll print jobs to their wide format capabilities. This CMYK printer comes standard with two channels of white for those high-value prints. It features UltraDrop™ Technology 7pL printheads with greyscale printing up to 1200 dpi and a magnetic linear drive for better drop placement, resulting in a greater colour gamut.

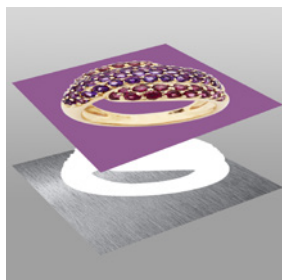
EFI white ink leads the industry in brightness and opacity, and can be imaged like any other colour, in greyscale, up to 1200 dpi, and using our multilayer printing with up to five layers in a single pass.

---

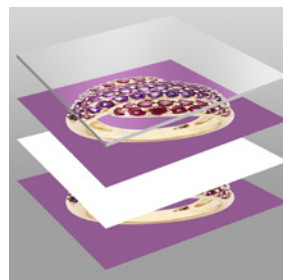
### White ink print modes



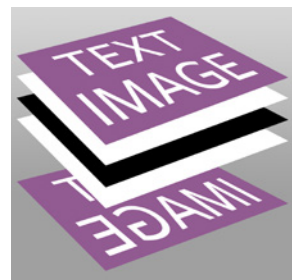
**FLOOD WHITE**



**SHAPE WHITE**



**DAY/NIGHT BACKLIT**



**FIVE-LAYER  
BLOCKOUT GRAPHIC**

---



## Wide versatility that opens up new opportunities

The powerful combination of EFI's hybrid and LED curing technology will not only help you meet the growing demands for higher quality with quicker turnaround times, but also offer you the ability to print on new and unique substrates, including high-value speciality substrates – opening doors to more applications and unique, creative opportunities.

# Wide productivity that keeps the jobs moving



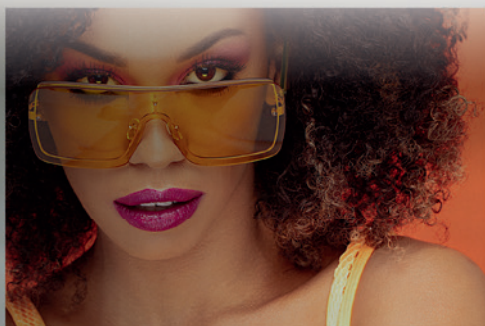
With productivity up to 230 m<sup>2</sup> per hour, you'll be able to take on more jobs and keep them moving to satisfy customer demand for faster turnarounds.



Continuous Board printing is a standard feature and allows you to maximise the printer's full production speeds with large boards or multiple small boards



Changeover from rigid to flexible printing is fast and easy, and the Pro 30h features dual-roll printing for even more throughput.



# Wide design features for true production environments

Fully enclosed image area keeps production area dust and debris from getting in and around the carriage

Dual touchscreen graphical user interface available on the front and back of printer for ease of operation



Advanced media-platen vacuum system with six chambers having their own independent vacuum power controls for hold down and preventing media movement

Includes an EFI Fiery® proServer Core digital front end (DFE), featuring FAST RIP acceleration technology, plus RIP and print on demand functionality or the ability to print pre-ripped files

## EFI's market leading green LED technology



Brilliantly designed “cool cure” LED technology empowers you with the ability to do more for less. Increase your profit opportunity by offering more premium-margin jobs while reducing operating costs and your environmental footprint:

- Meet the growing demands for higher quality with quicker turnaround times while extending your range of supported substrates, including lower cost and added-value speciality media, with lower heat LED lamps
- Increases uptime and productivity with instant on/off and less maintenance
- Drives down operating costs with significantly less energy consumption (1.8 kW instead of 10 kW and lamps are only on during printing), less waste trying to find the right cure level, and fewer consumable parts
- Reduces waste with consistent colour output and simple operation
- Satisfies customer requests for a greener print solution with low VOCs, lower power consumption, and less waste and consumables

---

## The ultimate printing innovation – UltraDrop Technology from EFI



Demanding customers want ultra-quality, ultra-crispness, and ultra-capabilities. That's why EFI's UltraDrop Technology offers smaller drop sizes and more precise control. The results are ultra-impressive:

- Native 7 pL printheads with true multi-drop addressability
- High apparent resolution and high-definition print quality
- Outstanding smoothness in shadows, gradients, and transitions
- Superb text quality with four-point text in both standard and high quality, with fewer satellites and more clarity in all print modes

# Inks made for **real results** in the real world

Our Genuine EFI ProGraphics™ Series UV Inks have been custom formulated based on real-world applications. And they've been exhaustively tested and optimised for our wide format printers. We use the same brilliantly coloured pigments in each of the EFI ProGraphics UV ink sets, so you always get the same great extended colour gamut regardless of which ink set you choose. With EFI ProGraphics UV inks, you get the quality and performance you'd expect from Genuine EFI Inks – so that you always print with flying colours.

## High adhesion ink

EFI ProGraphics UV LED XA ink was developed with high adhesion properties for printing on an extensive range of rigid and flexible media, including corrugated plastics and other materials with adhesion challenges.

---

## Turn CMYK into ROI

As your business evolves, you can change your EFI ProGraphics UV ink set<sup>1</sup> to match new applications and substrates. Minimising colour adjustments and ensuring a perfect colour match every time is as easy as selecting the proper profile.



---

<sup>1</sup> EFI ProGraphics Series UV Inks are NOT top loadable and require a simple changeover kit to move from one ink set to the other.



# Driven by Fiery – the **world leader** in digital inkjet colour printing



With over 30 years as a worldwide market leader in digital front-end innovation, Fiery DFEs provide outstanding image and colour quality with features to make print results truly exceptional.

The high-performance, built-in, Fiery proServer Core comes with production, colour, and layout features. It contains:

- Fiery XF server software for Windows® including:
  - Spot Color Option
  - Color Verifier Option
  - Cut Marks Option
  - Color Profiler Option
- Unlimited macOS® or Windows installations of Fiery Command WorkStation® with up to 10 concurrent connections
- One-year Fiery proServer hardware and Fiery XF software warranty



# Add **intelligence** to your print business with EFI IQ

Unlock the value of your production data by connecting your printers to EFI IQ. Use the EFI IQ suite of cloud applications to make data-driven decisions so you can improve ROI, minimise cost, maximise profit, and boost revenue.

EFI IQ lets you connect your people, processes, and print devices, so you can make better data-driven decisions. Use the EFI IQ applications to:

- Visualise key production data and the current status of your printers in near real time
- Capture and transform print production data into actionable analytics to drive business improvement
- Stay connected to your print production systems, view print devices and monitor job data anytime, anywhere from your iOS and Android devices
- Receive alerts about production-blocking events, and automate the distribution of reports to ensure that you never miss any production issue

Build a stronger, more profitable business with your production data using EFI IQ applications.



# Be ready for anything with EFI's Enhanced Service Programme (ESP)



Ensure the success of your business with a comprehensive EFI ESP response-based agreement and peace-of-mind maintenance options for your EFI Pro 30h printer.

- Twelve months of Essential coverage, with 24-business hour (three business day) response
- Field service engineer labour and travel for repairs
- Non-consumable parts
- All printer software and hardware updates
- Priority technical phone support
- Coverage for your Fiery XF digital front end including all software updates and upgrades as well as telephone and email support during business hours with targeted response and resolution times
- Multi-printer discounts available
- Add one or more of our peace-of-mind options to your ESP contract to ensure additional printhead and belt replacements are covered if they are needed

## TECHNICAL SPECIFICATIONS

MEDIA/HANDLING	
Maximum printable width	320 cm
Maximum media thickness	5.08 cm
Six-zone, user-selectable vacuum system	
Maximum media weight on table	90.7 kg
Maximum roll weight	200 kg
Maximum roll diameter	30.5 cm
PRODUCTIVITY	
Express mode maximum speed	230 m <sup>2</sup> /hr
White printing at one-half CMYK speeds	
FILE FORMATS	
All popular desktop files formats, including Adobe® PostScript® 3™, EPS, TIFF, PDF, and RGB/CMYK	
ENVIRONMENTAL CONSIDERATIONS	
Temperature	20–30 °C
Humidity:	40%–80% (noncondensing)
Weight:	Approximately 3100 kg uncrated
Dimensions (W x D x H):	575 cm x 192 cm x 194 cm
Electrical:	200–240VAC, single phase, 50/60 Hz 32A
EFI PROGRAPHICS SERIES UV INKS	
5.0-litre containers	
Twelve-month shelf life	
EFI FIERY DIGITAL FRONT END	
Ships with an EFI Fiery proServer Core digital front end	

We develop breakthrough technologies for the manufacturing of signage, packaging, textiles, ceramic tiles, building materials and personalised documents, with a wide range of printers, inks, digital front ends, and a comprehensive business and production workflow suite that transforms and streamlines the entire production process, increasing your competitiveness and boosting productivity. Visit [www.efi.com](http://www.efi.com) or call 0808 101 3484 (UK only) or +44 (0)1246 298000 for more information.



Nothing herein should be construed as a warranty in addition to the express warranty statement provided with EFI products and services.

AutoCal, Auto-Count, Best Eye, ColorGuard, ColorPASS, ColorRight, ColorWise, Command WorkStation, Cretachrom, Cretaprint, the Cretaprint logo, Cretaprinter, Cretaroller, Digital StoreFront, Divisional Graphics, Distancing Graphics, DocBuilder, Dynamic Wedge, EDOX, EFI, the EFI logo, Electronics For Imaging, EPCount, EPPPhoto, EPRRegister, EPStatus, Estimate, FabriVu, Fast-4, FASTRIP, FASTDRIVE, Fiery, the Fiery logo, Fiery Compose, Fiery Driven, the Fiery Driven logo, Fiery DesignPro, Fiery Edge, Fiery Impose, Fiery ImageViewer, Fiery Intensify, Fiery JobExpert, Fiery JobFlow, Fiery JobMaster, Fiery Navigator, Fiery Prints, the Fiery Prints logo, FreeForm, GameSys, Hagen, InkIntensity, Inkware, IQ, iQuote, LapNet, Lector, Logic, MarketDirect StoreFront, MarketDirect VDP, MarketDirect Cross Media, Metrics, Metrix, MicroPress, Monarch, Monarch Planner, OneFlow, Optima, Optitex, Organizing Print, Pace, Pecas, Pecas Vision, PC-Topp, PressVu, PrinterSite, PrintFlow, PrintMe, the PrintMe logo, PrintSmith, PrintSmith Site, PrintSmith Vision, PrintStream, Profile®, Process Shipper, Prograph, ProGraphics, PSI, PSI Flexo, Radius, RIPChips, RIP-While-Print, SafeGuard Graphics, Spot-On, Spot Pro, Synchro 7, Technique, UltraDrop, UltraPress, UltraTex, UltraVu, UV Series 50, VisualCal, VUTEK, the VUTEK logo, and WebTools are trademarks or registered trademarks of Electronics For Imaging, Inc. and/or its wholly owned subsidiaries in the U.S. and/or certain other countries.

All other terms and product names may be trademarks or registered trademarks of their respective owners and are hereby acknowledged.