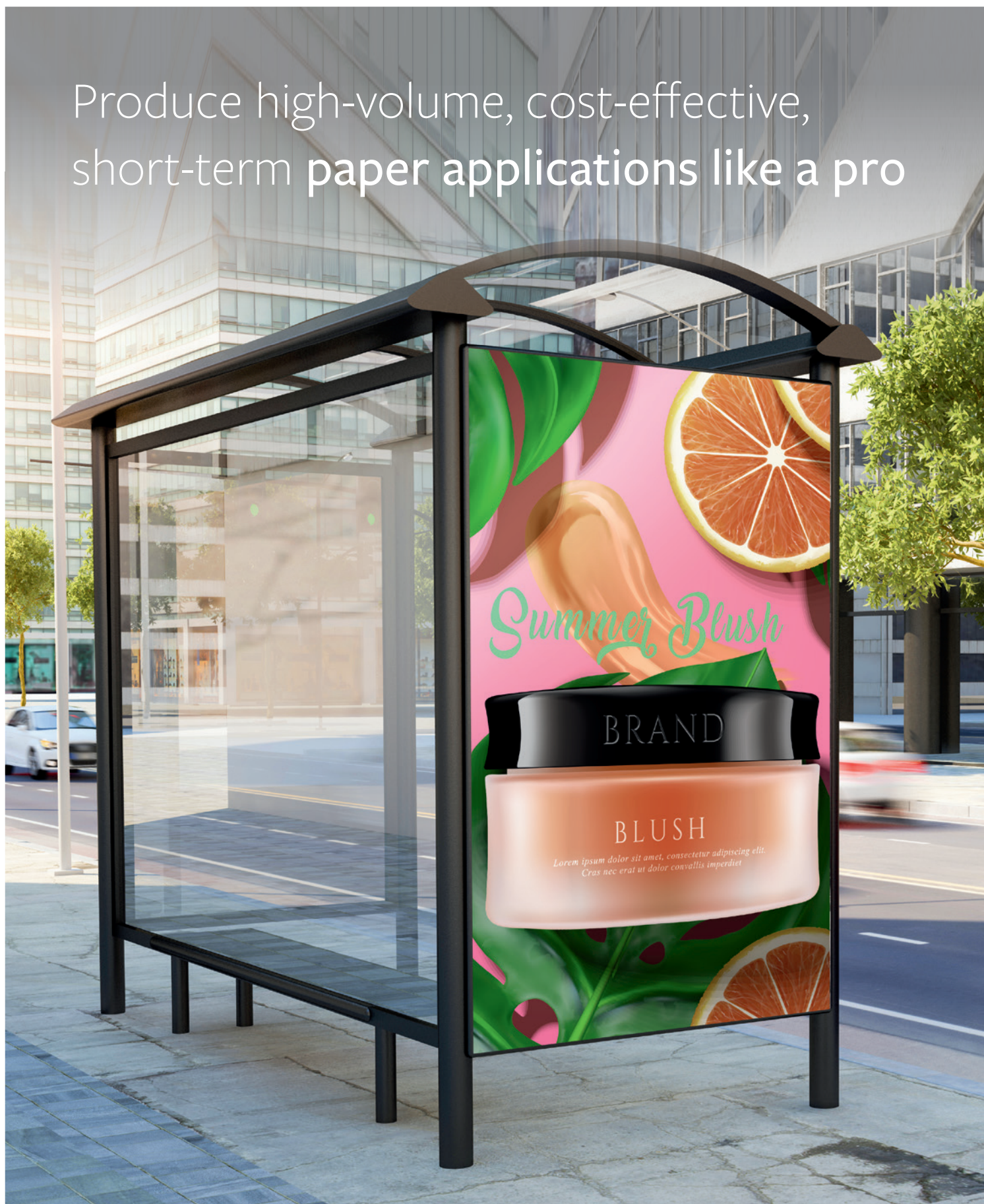




VUTEK® PaperPro

Water-based printing solution for paper applications

Produce high-volume, cost-effective,
short-term paper applications like a pro



Win the paper chase with the new EFI VUTEk PaperPro printer

Get jobs done faster and more cost-effectively

As demand grows for low-cost, short-term, and recyclable indoor and outdoor paper applications, you need a solution that will keep costs down and productivity up. Introducing the EFI™ VUTEk® PaperPro water-based printing solution for paper applications. It's designed to print on a wide range of papers at production-level speeds so you can turn jobs faster and keep running costs low.

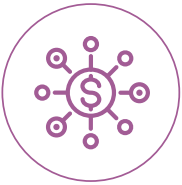


Free up capacity with dedicated high volume paper printing



Free up your digital production equipment for higher-margin jobs

- Efficiently print on a wide range of papers 30 to 350 gr/m² thick
- Quickly turn jobs with productivity up to 585 m²/hr
- Enable continuous printing with the 1200 kg jumbo roll feeder
- Integrate an inline cutting device for a complete print to finished graphic workflow



Produce cost-effective out of home applications

- Highly efficient ink yields greater than 200 sqm/L
- High efficiency dryer
- Ink recirculation system reduces purging, maintenance needs and stoppages, saving costs associated with ink and media waste
- Ink management with in-line continuous degassing and filtering
- Easy set-up, an easy-to-maintain system, user-replaceable printheads, and fast and tool-free printhead alignment saves your operator time



Satisfy customer requests for sustainable solutions

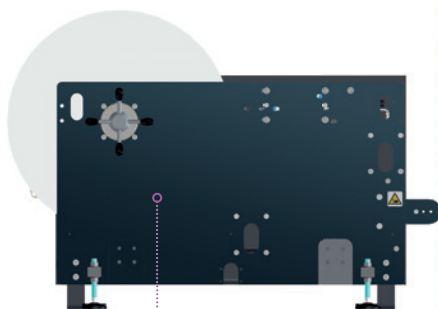
- Environmentally friendly water-based pigmented inks
- Recyclable prints



Pro features that mean productivity and profitability

PRINTER

- Four colours (CMYK)
- Pigmented, aqueous-based inks
- Variable drop on demand with 4 to 72 pL drop sizes
- Print resolution up to 600 dpi
- High-precision transportation belt with advancement accuracy of 40 microns
- Innovative and adaptive GUI with advanced queuing features



SUPPORTS JUMBO ROLLS

- Enables continuous print
- Maximum weight 1,200 kg
- Maximum out diameter 90 cm



CONNECTIVITY KIT FOR INTEGRATING AN
INLINE CUTTING AND TRIMMING DEVICE



HIGH-EFFICIENCY DRYER

Paper never looked better

Key applications

- Billboards
- Bus shelters
- Backlit graphics
- Posters
- Advertising columns
- Hoardings /Protective barriers
- POP





TECHNICAL DATA

General	
Technology	Variable drop on demand with 4 to 72 pL drop sizes
Colours	Four (CMYK)
Inks	Pigmented, aqueous based
Printheads	16
Print resolution	Up to 600 dpi
Dryer	Industrial, electrical-based with conveyor belt
Ships with an EFI Fiery® proServer Premium digital front end with colour management workflow and RIP	
Productivity	
Outdoor Production (1 pass)	585 m ² /hr
Indoor POP (2 pass)	325 m ² /hr
Quality (3 pass)	252 m ² /hr
High Quality (4 pass)	180 m ² /hr
Media handling	
Paper weights	30 to 350 gr/m ²
Maximum weight	1,200 kg
Maximum outer diameter	90 cm
Maximum printing width	185 cm
Connectivity kit for integrating an inline cutting and trimming device	

Dimensions	
Length	848 cm
Width	530 cm
Height	264 cm
Weight	
Printer	4,600 kg
Dryer	2,300 kg
Electrical Operational Consumption	
Printer	15 kW
Dryer	32 kW
Environmental conditions	
Temperature	18-30° C
Humidity	50-60% RH
Water volume	5 litres/min

Let's be brilliant. Together.

We understand you want breakthrough technologies to lead you through your digital journey. That's why we're passionate about driving your business growth with a scalable portfolio of products, solutions, services, support, and world-class partnerships for the manufacturing of signage, packaging, textiles, ceramic tiles, building materials, commercial print, and personalised documents with a wide range of printers, inks, digital front ends, and workflow software. Our unwavering commitment is to increase your profits, cut costs, improve productivity, and optimise efficiency — job after job, year after year. We're obsessed with your success. And we definitely believe we have the right people, technology and experience to help your business achieve its goals. Visit www.efi.com or send an email to info@efi.com for more information.



Nothing herein should be construed as a warranty in addition to the express warranty statement provided with EFI products and services.

AutoCal, Best Eye, ColorGuard, ColorPASS, ColorRight, ColorWise, Command WorkStation, Cretachrom, Cretaprint, the Cretaprint logo, Cretaprinter, Cretaroller, Divisional Graphics, Distancing Graphics, DocBuilder, Dynamic Wedge, EDOX, EFI, the EFI logo, Electronics For Imaging, FabriVu, Fast-4, FASTRIP, FASTDRIVE, Fiery, the Fiery logo, Fiery Compose, Fiery Driven, the Fiery Driven logo, Fiery Edge, Fiery Essential, Fiery HyperRIP, Fiery Impose, Fiery Impress, Fiery ImageViewer, Fiery Intensify, Fiery JobExpert, Fiery JobFlow, Fiery JobMaster, Fiery Navigator, Fiery Prep-it, Fiery Prints, the Fiery Prints logo, Fiery TrueBrand, FreeForm, Inkintensity, Inkware, IQ, MicroPress, OneFlow, PressVu, PrintMe, the PrintMe logo, Prograph, ProGraphics, RIPchips, RIP-While-Print, SafeGuard Graphics, Spot-On, Spot Pro, UltraDrop, UltraPress, UltraTex, UltraVu, UV Series 50, VUTEK, the VUTEK logo, and WebTools are trademarks or registered trademarks of Electronics For Imaging, Inc. and/or its wholly owned subsidiaries in the U.S. and/or certain other countries.

All other terms and product names may be trademarks or registered trademarks of their respective owners and are hereby acknowledged.

© 2022 ELECTRONICS FOR IMAGING, INC. ALL RIGHTS RESERVED. | WWW.EFI.COM

AC_60_o8_22_UK